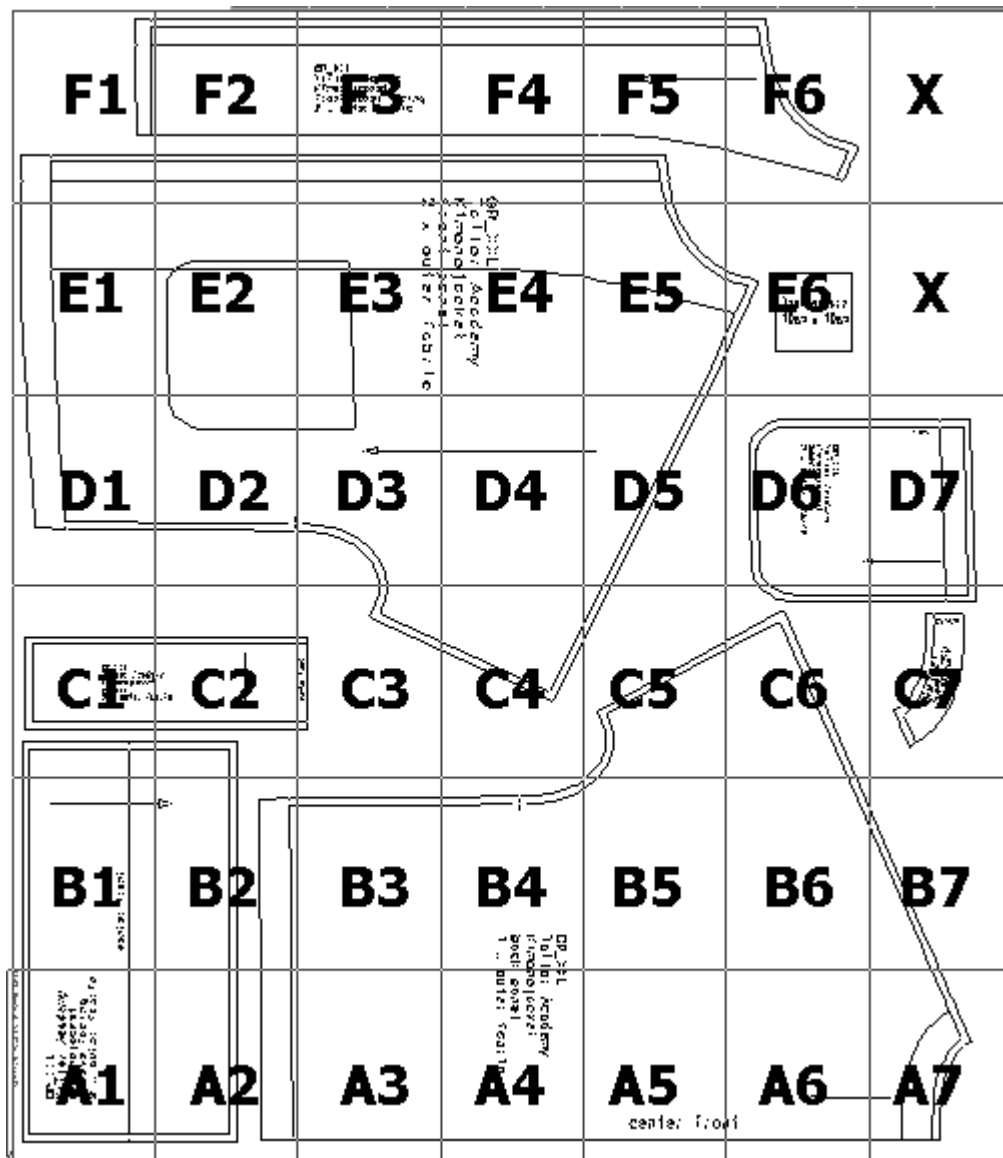


Printing overview

Important: Please print the test page to ensure your patterns are printed in the correct size. The test page and printing instructions are included in the downloads folder.



2 x no f e j a b c
s l e e v e f a c i n g
K i m o n o j a c k e t
T a i l o r A c a d e m y
G R _ X L

(A,01): Kimono jacket.mdl (..\Tailor Academy_new\)

((A,02): Kimono jacket.mdl (..\Tailor Academy_new\))

(A,03) : Kimono jacket.mdl (..\Tailor Academy_new\)

XL

lor Academy

ono jacket

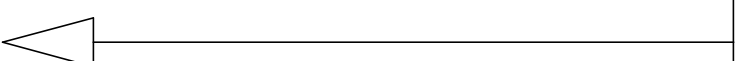
k panel

outer fabric

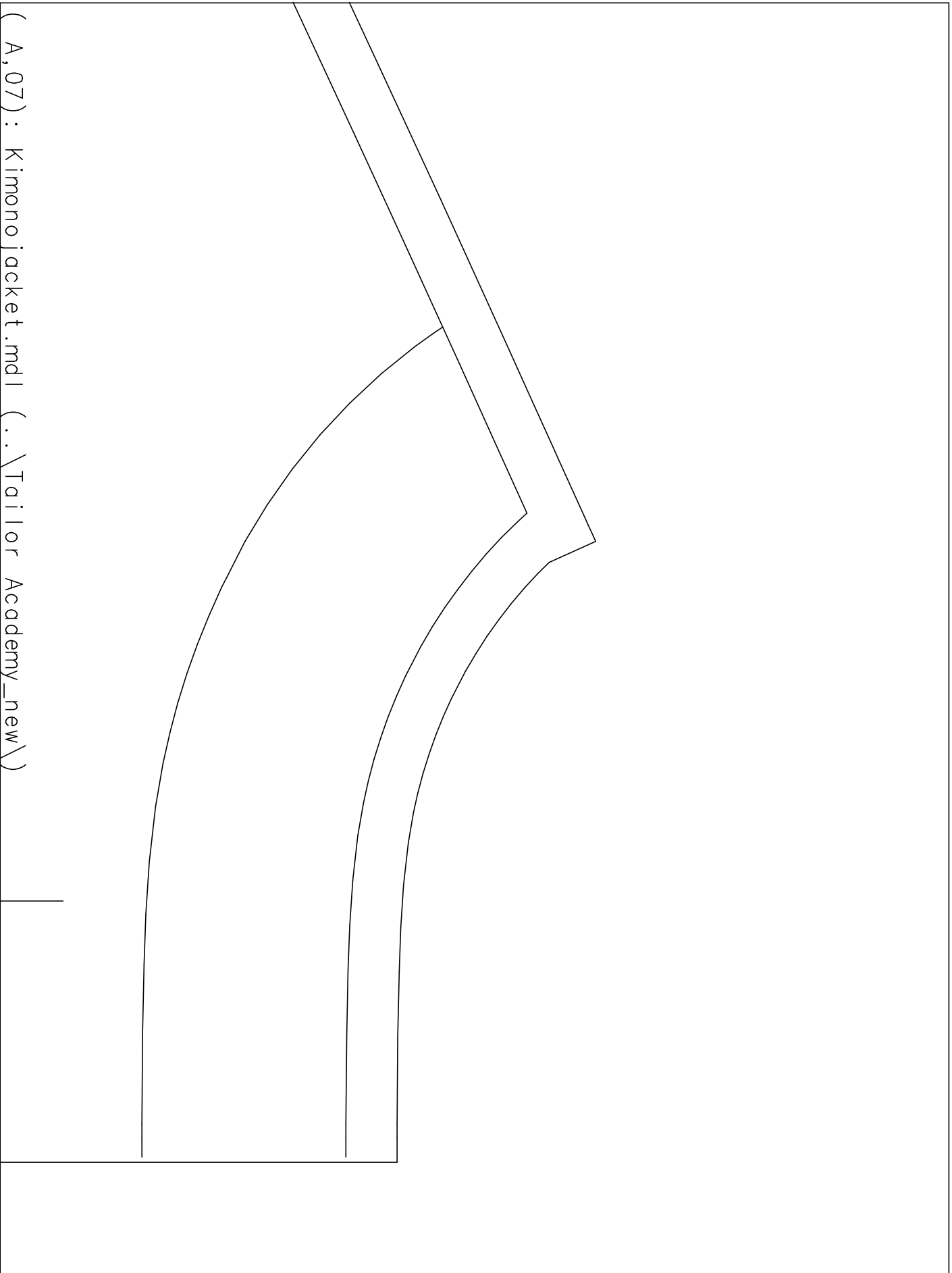
(A,04) : Kimono jacket.mdl (..\Tailor Academy_new\)

(A,05) : Kimono jacket.mdl (..\Tailor Academy_new\)

center front



(A,06) : Kimono jacket.mdl (..\Tailor Academy_new\)



(A,07) : Kimono jacket.mdl (..\Tailor Academy_new\)



((B,02): Kimondia jacket.mdl (..\Tailor Academy_new\))

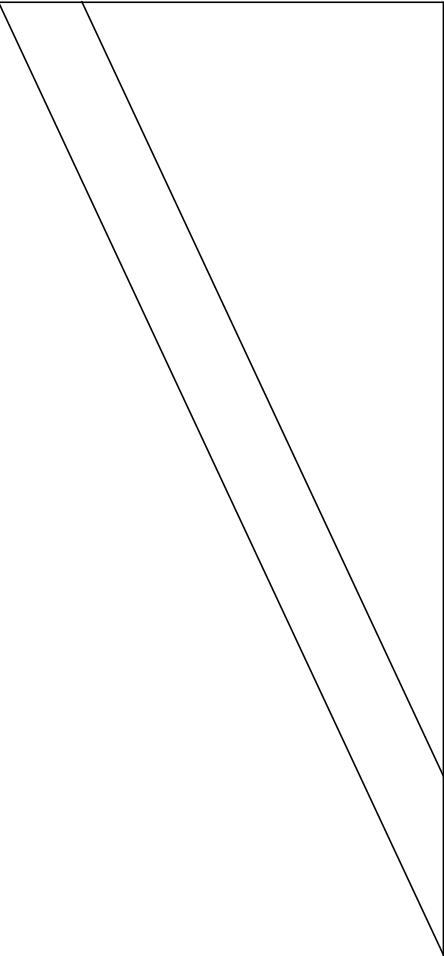
--	--	--

(B,03) : Kimono jacket.mdl (..\Tailor Academy_new\)

GR_1
T*ai*
K*imono*
back
1 X

(B,04) : Kimono jacket.mdl (..\Tailor Academy_new\)

(B, 05): Kimono jacket.mdl (..\Tailor Academy_new\)



(B,06) : Kimono jacket.mdl (..\Tailor Academy_new\)

(B,07) : Kimono jacket.mdl (..\Tailor Academy_new\)

(C,01): Kimonojacket.mdl (..\Tailor Academy_new\)

GR_XL
Tailor Academ
Kimonojacket
collar
2 x outer fab

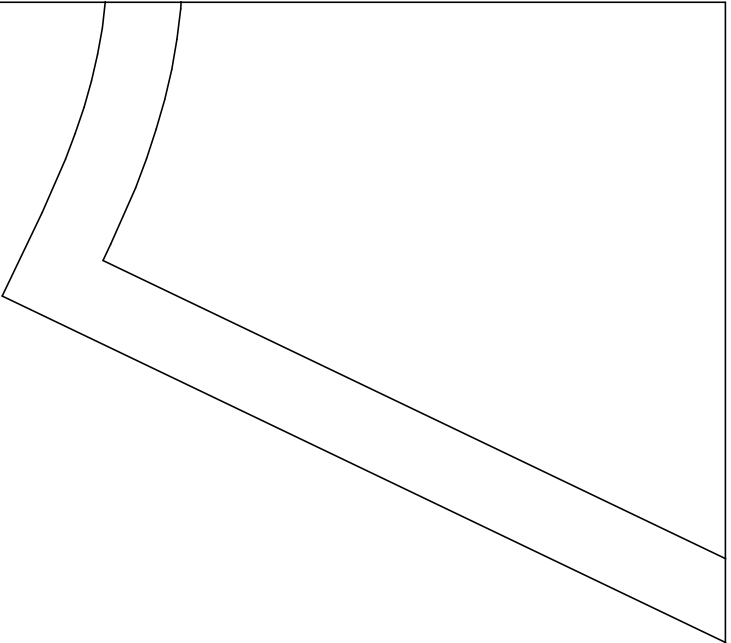
center front



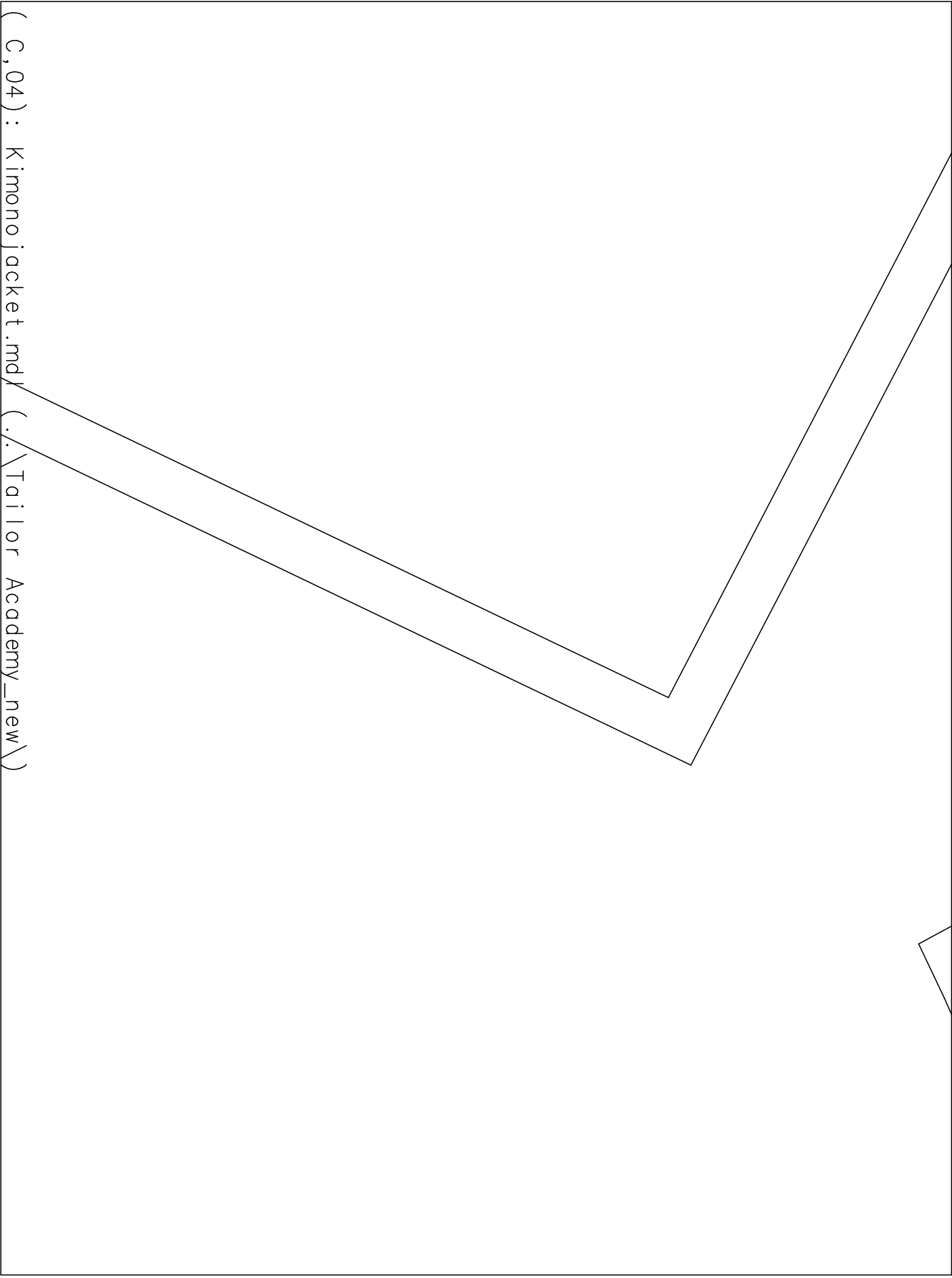
C

—

(C,02): Kimono jacket.mdl (C:\Tailor Academy_new\2

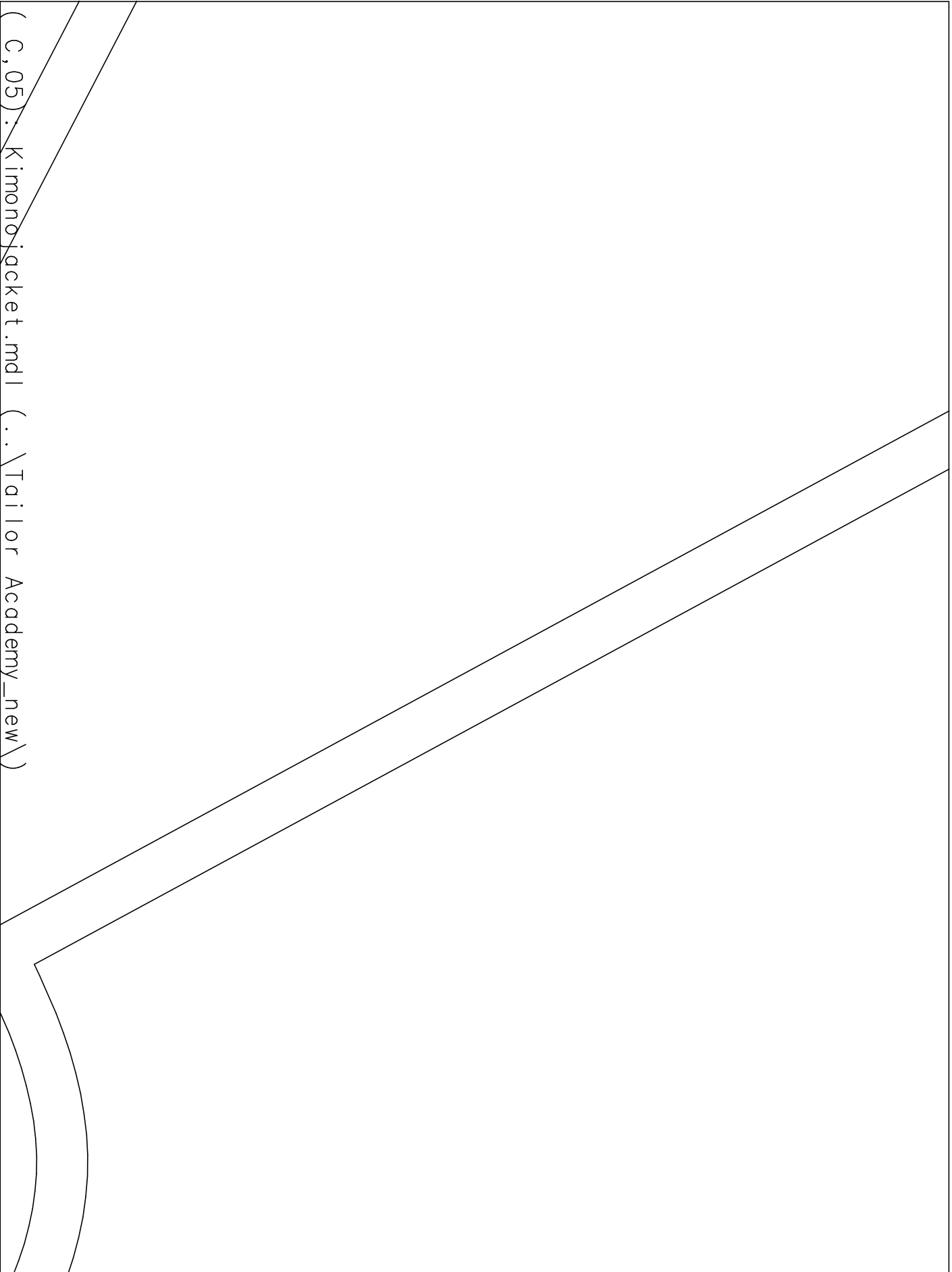


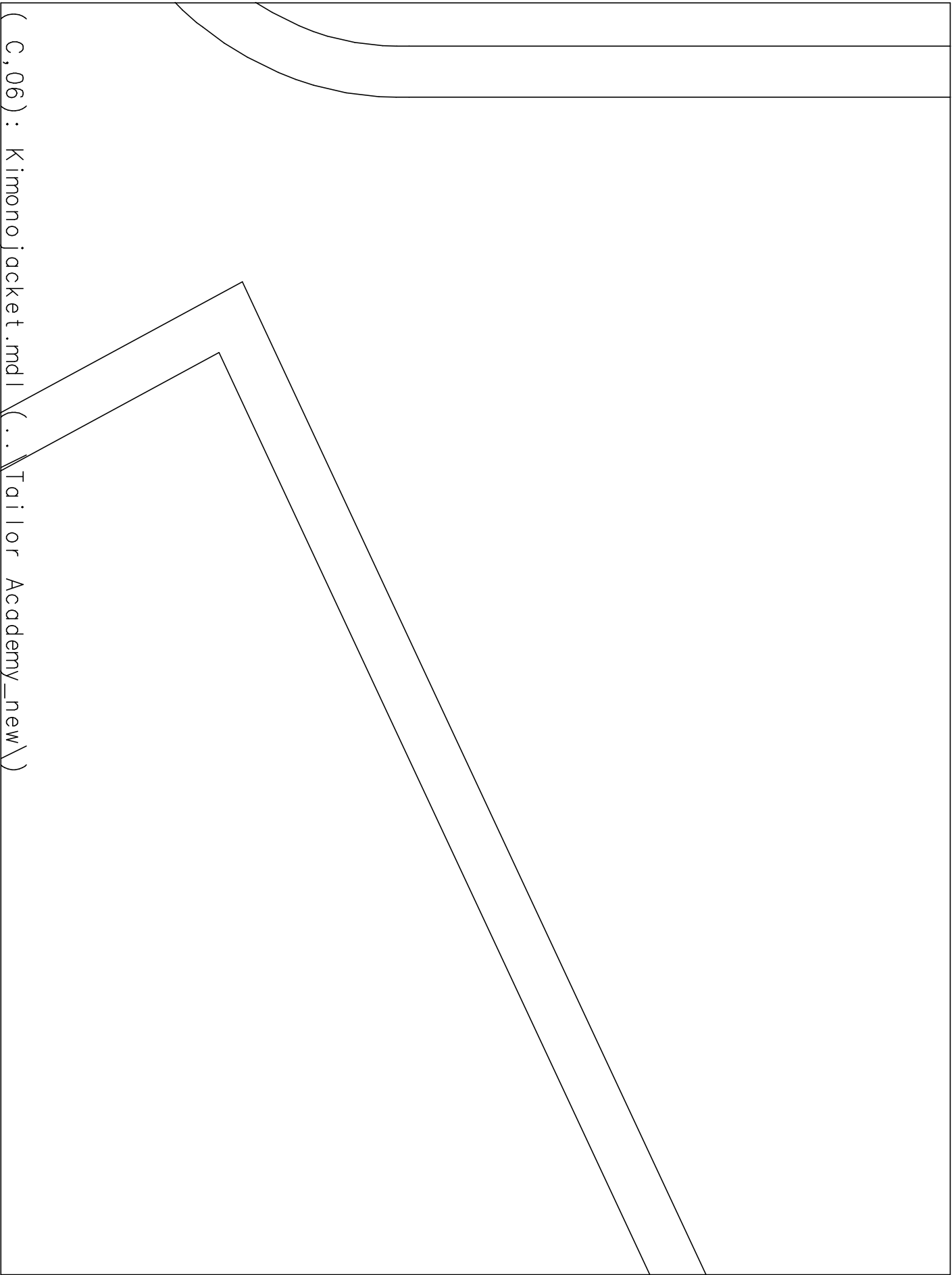
(C,03) : Kimono jacket.mdl (..\Tailor Academy_new\)



(C, 04) : Kimono jacket.mdl

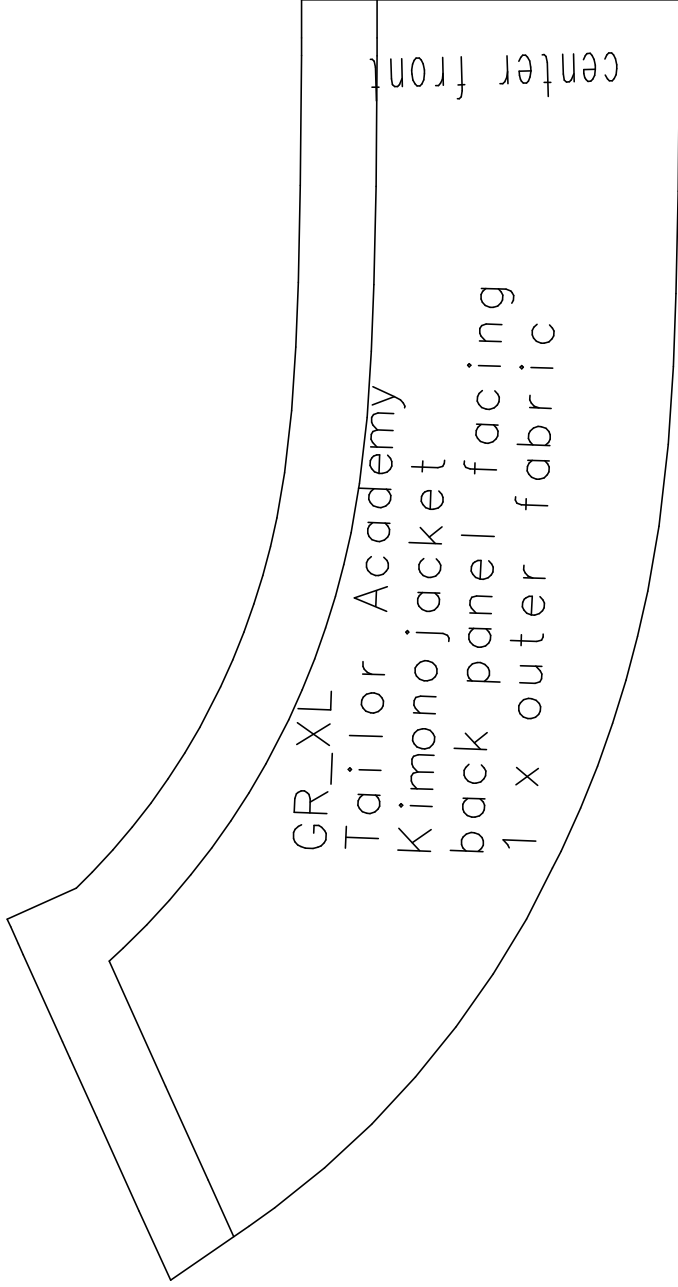
(..\Tailor Academy_new\)



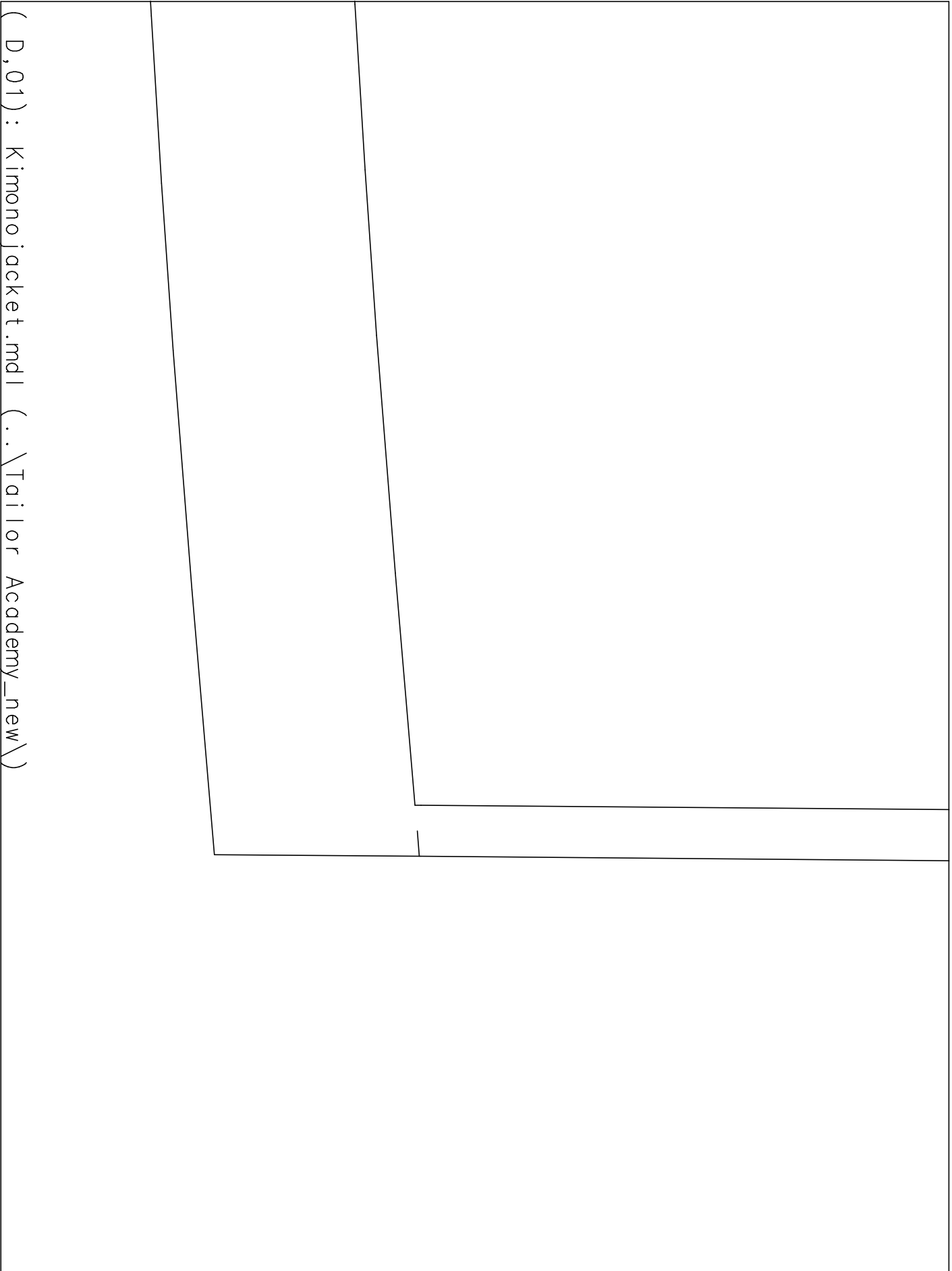


(C,06) : Kimono jacket.mdl (...Tailor Academy_new\)

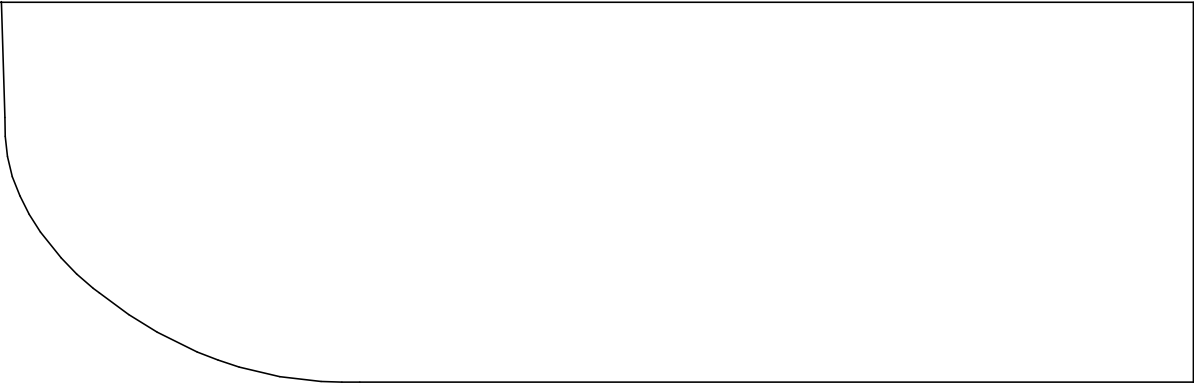
(Q,07) : Kimono jacket.mdl (..\Tailor Academy_new\)



center front

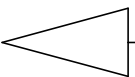


(D,01) : Kimono jacket.mdl (..\Tailor Academy_new\)

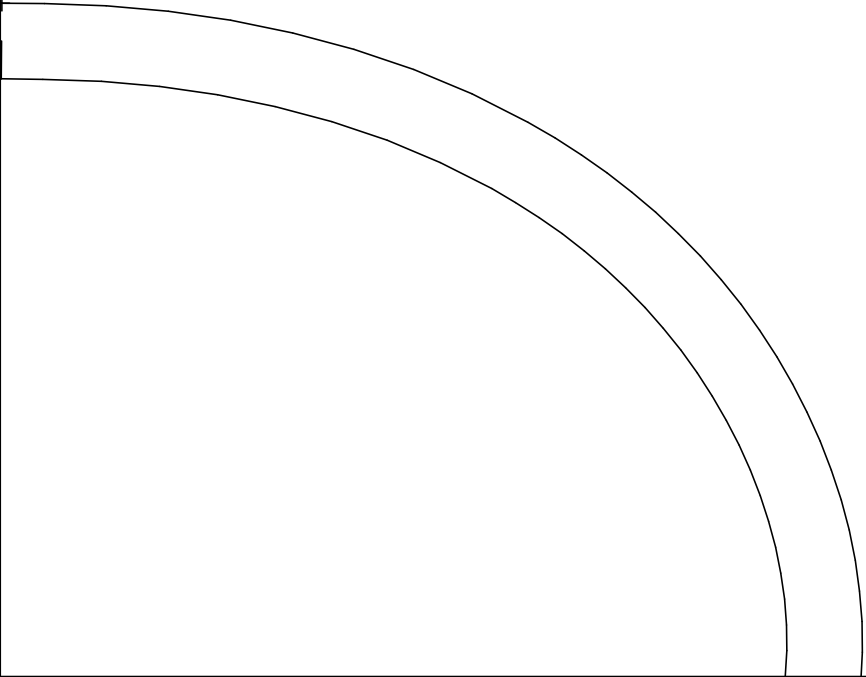


(D,02) : Kimono jacket.mdl (..\Tailor Academy_new\)

()

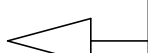


(D,03) : Kimono jacket.mdl (..\Tailor Academy_new\)

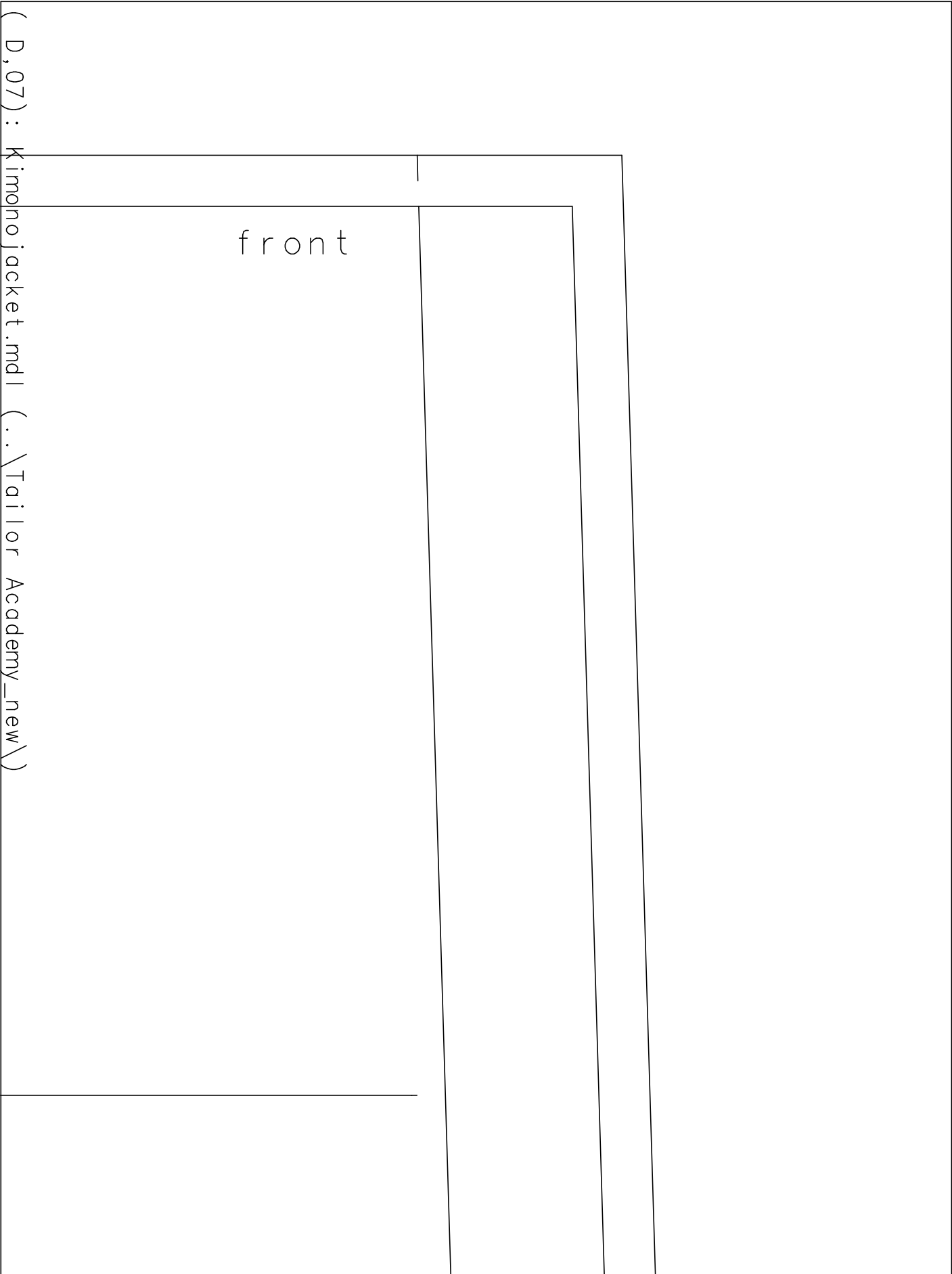


(D,04) : Kimono jacket.mdl	(..\Tailor Academy_new\)
-----------------------------	--------------------------

(D,05) : Kimono jacket.mdl | (..\Tailor Academy_new\)

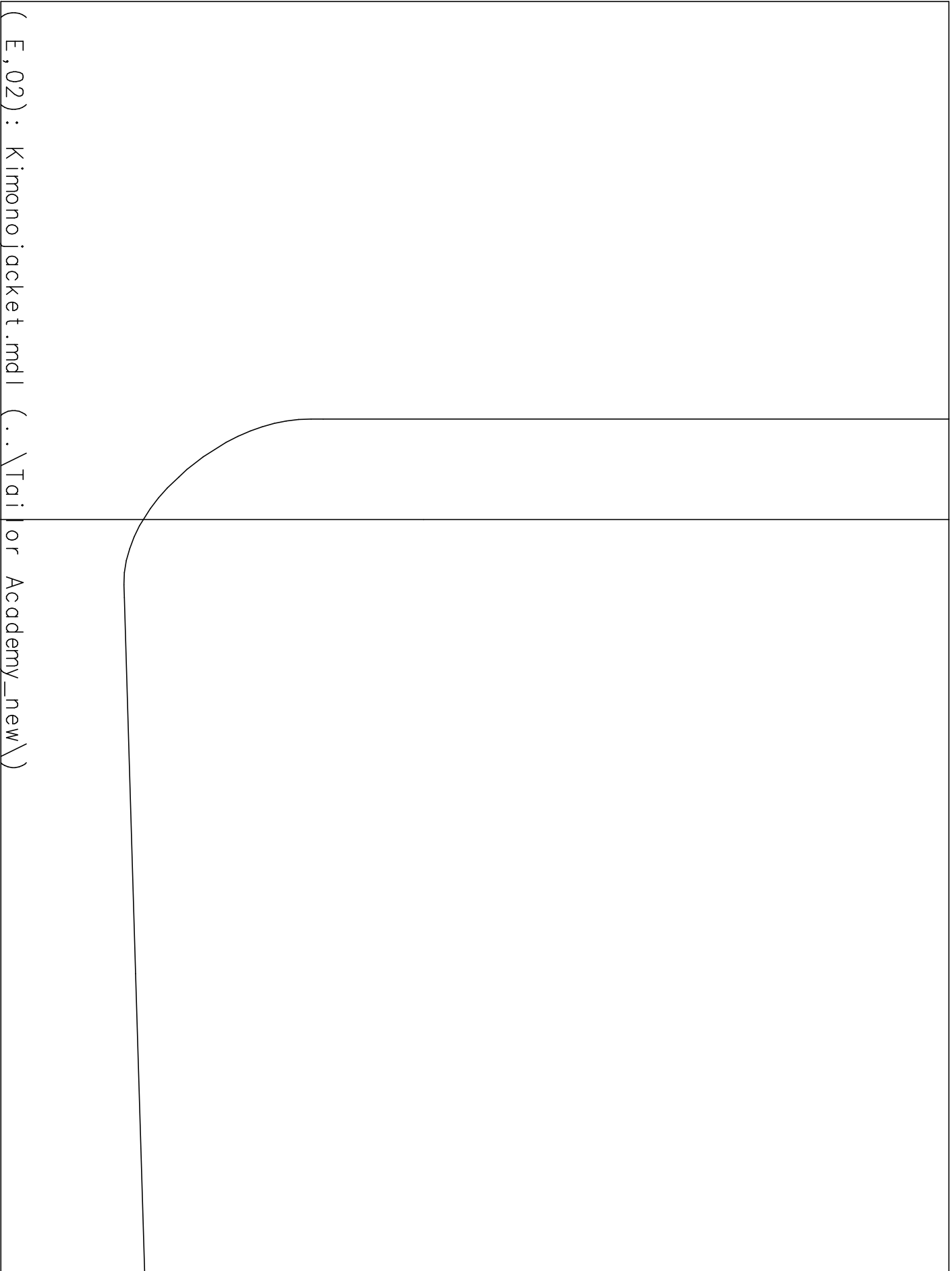


GR_XL
Tailor Academy
Kimono jacket
pocket
2 x outer fabric



(D,07): kimonojacket.mdl (..\Tailor Academy_new\)

(E,01) : Kimono jacket.mdl (..\Tailor Academy_new\)	



(E,02): Kimono jacket.mdl (..\Tailor Academy_new\)

2 X Outer fabric

(E, 03) : Kimono jacket.mdl (..\Tailor Academy_new\)

GR_XL

Taiilor

Kimono

Academy

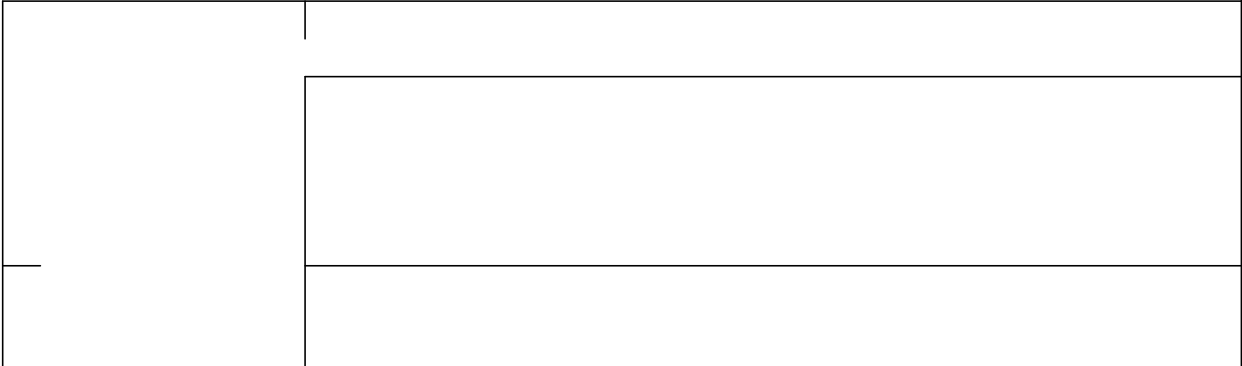
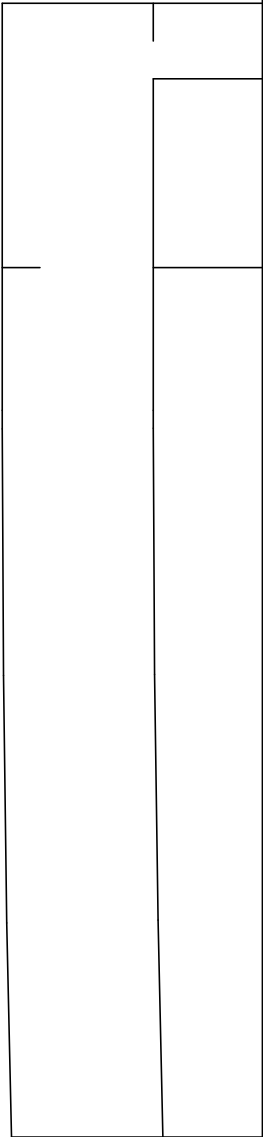
Jack et

(E,04): Kimono jacket.mal (..\Tailor Academy_new\)

e |



Test square
10cm x 10cm

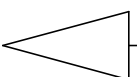


(F,01): Kimono jacket.mdl (..\Tailor Academy_new\)

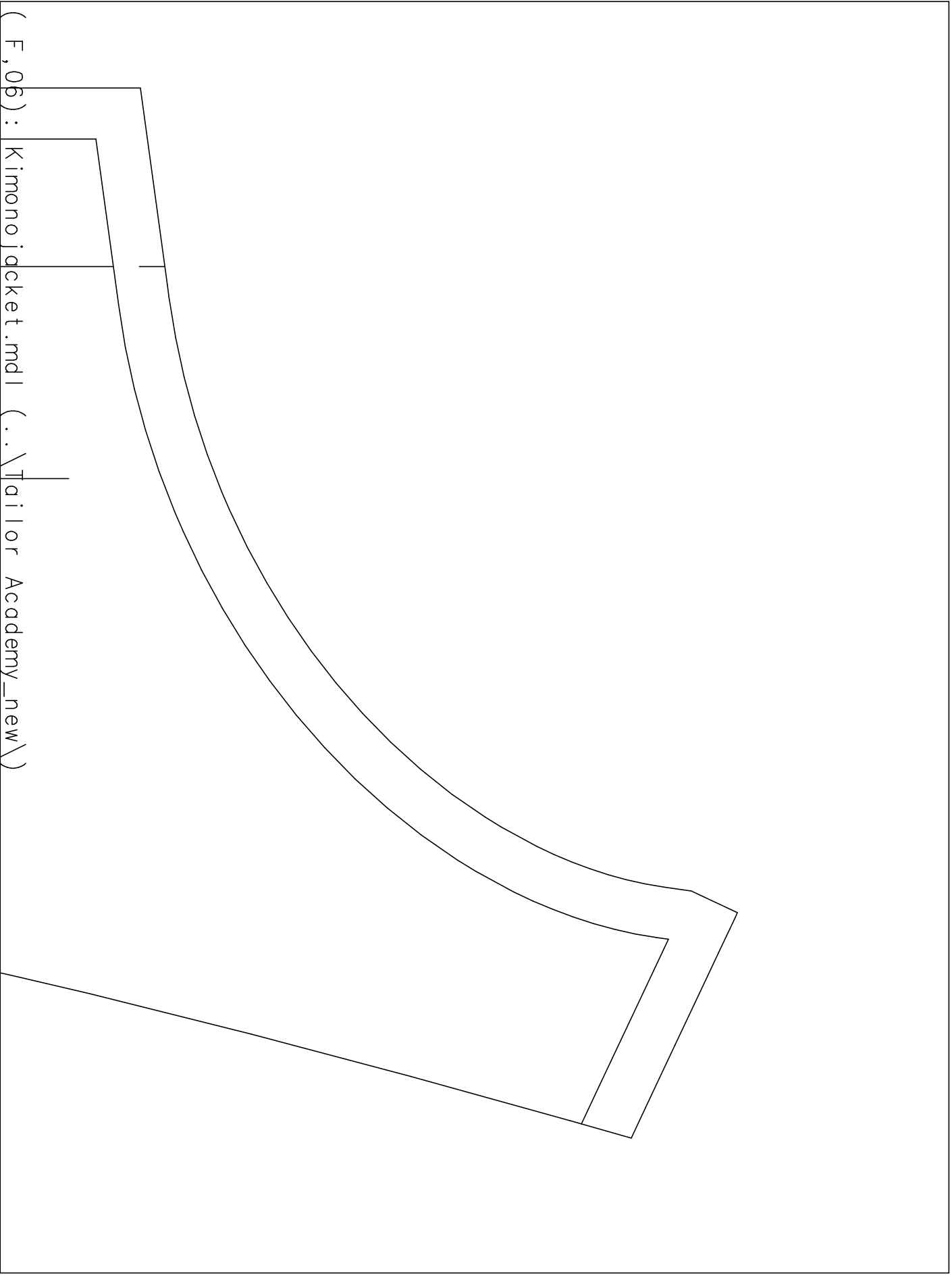
((F, 02): Kimono jacket.mdl (..\Tailor Academy_new\))

(F, 03) : Kimono jacket.mdl (..\Tailor Academy_new\)	
	GR_XL Tailor Academy Kimono jacket front panel facing 2 x outer fabric

((F, 04) : Kimono jacket.mdl (..\Tailor Academy_new\))



(F, 05) : Kimono jacket.mdl (..\Tailor Academy_new\)



(F, 06) : Kimono jacket.mdl (..\Tailor Academy_new\)